

# CERTIFICATE OF LOCATION OF GOVERNMENT CORNER

EAST 1/4 Corner of Section 17, Township 106, Range 42, 5TH P.M.

STATE OF MINNESOTA, County of MURRAY

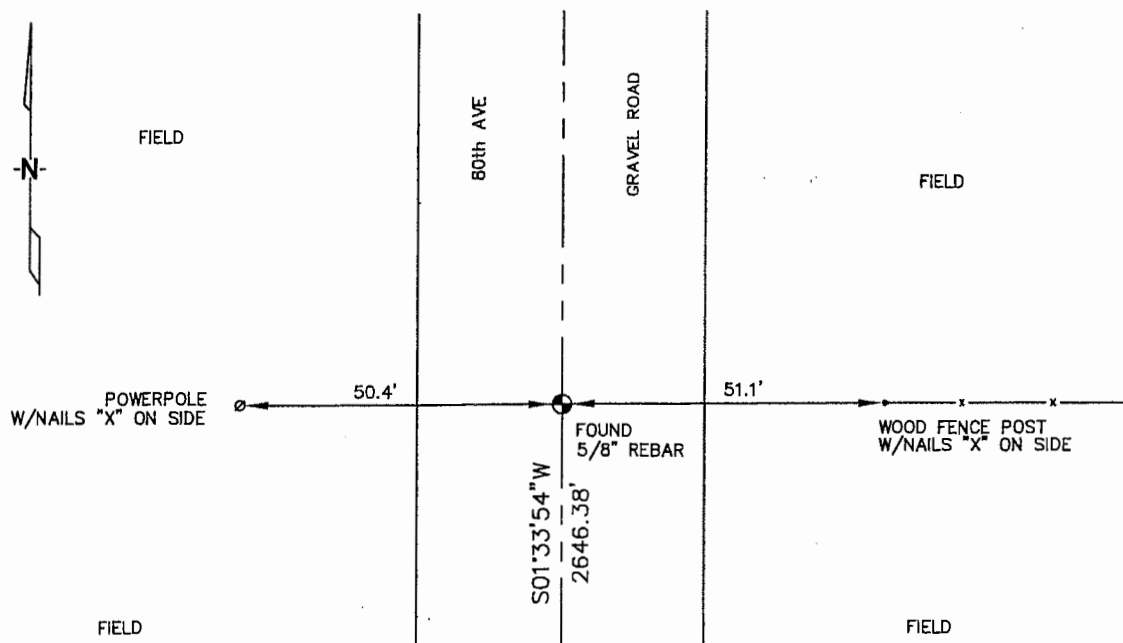
At the corner location shown on the sketch :

On 3/21/2006 found 5/8" REBAR, NO CAP, 10 GRAVEL ROAD,  
OPPOSITE FENCE LINE RUNNING EAST.

left monument as found,  lowered monument,  removed monument (explain)

On \_\_\_\_\_ set \_\_\_\_\_

### Sketch of reference ties



N: 693,400.53  
E: 2,123,678.62  
MN SOUTH ZONE, NAD 83

Statement of evidence relative to this corner location is on back page

I hereby certify that this document and the data contained herein was prepared by me or under my direct supervision.

Thomas V. Jeff 5/4/06  
Signature Date

Registration No. 49563  
 Land Surveyor,  Professional Engineer  
 County Surveyor,  County Engineer

OFFICE OF THE COUNTY RECORDER  
County of \_\_\_\_\_

SEP 28 2006

I hereby certify that this document was filed in the Co. Recorders office at \_\_\_\_\_ .M. on the day of \_\_\_\_\_ A.D. , 20

County Recorder James V. Johnson  
By \_\_\_\_\_, Deputy

DOCUMENT NO. \_\_\_\_\_

STATEMENT OF EVIDENCE:

EA67 14 CORNER, SECTION 17, T. 106 N., R. 42 W.,  
MURRAY COUNTY, MINNESOTA

1866

J. W. BISHOP, U.S. DEPUTY SURVEYOR, MONUMENTED  
CORNER AS PER INSTRUCTIONS.

? DATE

MURRAY CO. HIGHWAY DEPT., FOUND A STAKE.  
TIES: SE - 33.6' TO TACK IN BRACE POST.  
NE - 37.0' TO TACK IN TELEPHONE POLE.

3/21/2006

ULTEIG ENGINEERS, INC; SURVEY CREW, BRIAN  
PAYNE PARTY CHIEF FOUND A 5/8" REBAR IN  
GRAVEL ROAD, OPPOSITE FENCE LINE RUNNING EAST.  
TIES: W - 50.4' TO NAILED "X" ON SIDE OF POWER POLE;  
E - 51.1' TO NAILED "X" ON SIDE OF WOOD,  
POLE POST;  
S - 2646.38' TO SE CORNER, SEC. 17.